

GEOGRAPHY FORM II, TERM 2 -2021.

TIME: 2 HOURS

NAME..... CLASS.....ADM.....

Answer all the questions in the spaces provided

1. List three types of field work. (3mks)

.....
.....
.....
.....

2. Give four methods of data presentation. (4mks)

.....
.....
.....
.....
.....
.....

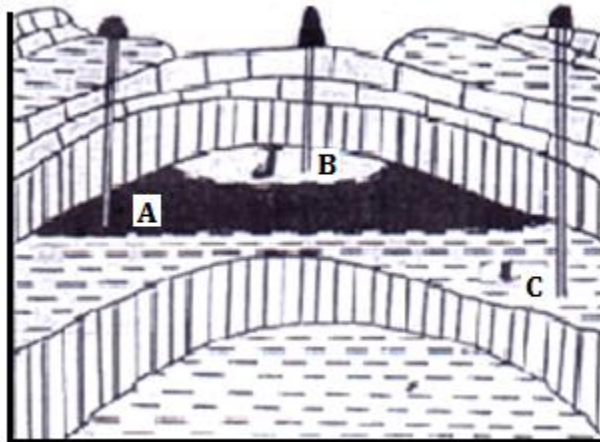
3. State four negative effects of mining on the environment? (4mks)

.....
.....
.....
.....
.....
.....

4. State four economic importance of minerals in Kenya. (4mks)

.....
.....
.....
.....
.....

5. The diagram below show the occurrence of a fossil fuel



Name the substances in the area labeled A, B and C. (4mks)

.....

.....

.....

.....

6. The table below shows petroleum production in thousand barrels per day for countries in the Middle East in April 2006 use it to answer questions.

COUNTRY	PRODUCTION IN '000' BARRELS
Iran	3800
Kuwait	2550
Qatar	800
Saudi Arabia	9600
U.A.E	2500
Iraq	1900

a) What is the difference in introduction between the highest and the lowest producer. (1mk)

.....

.....

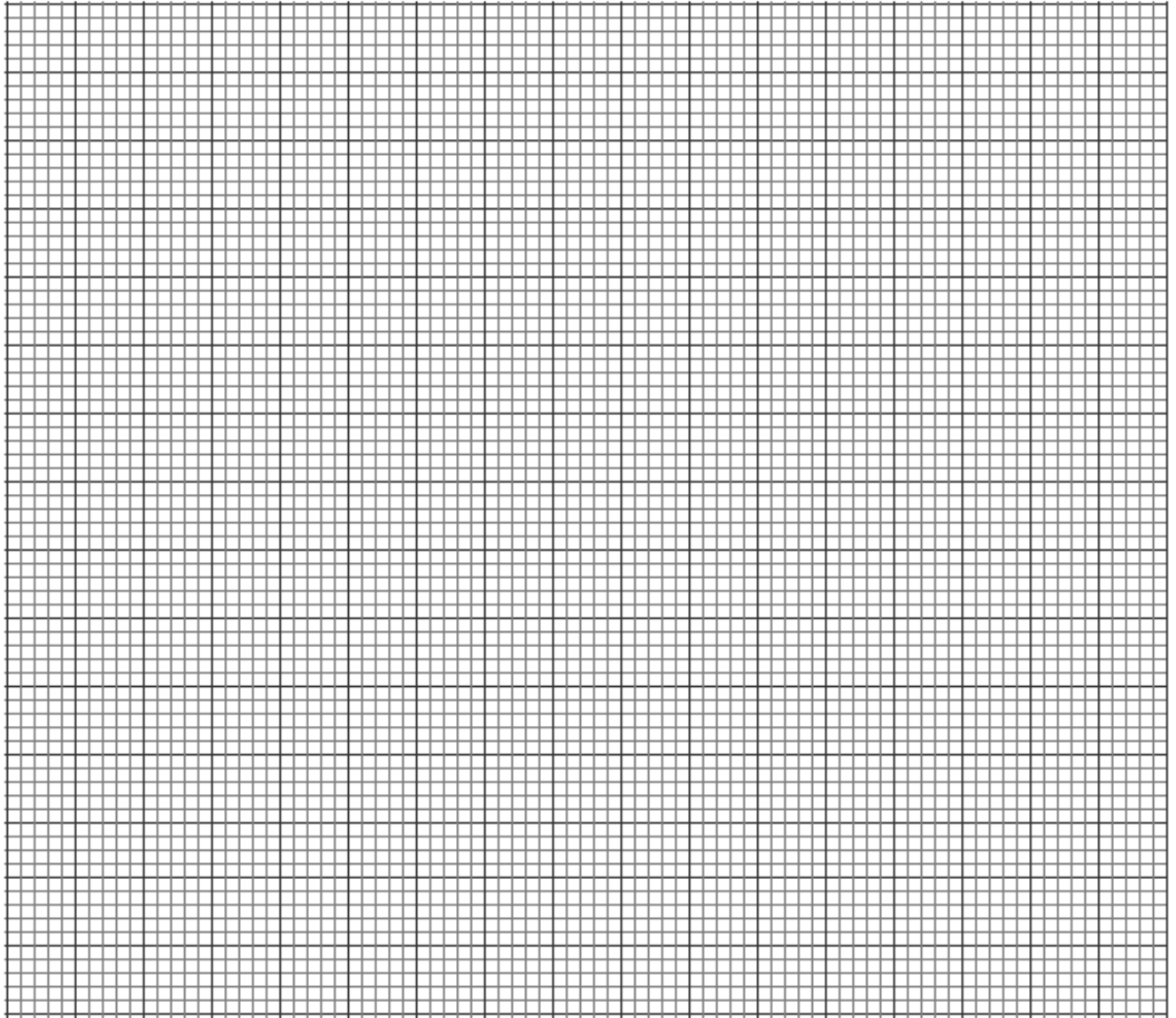
b) What is the total amount of petroleum produced in April 2006 in the region?(2mks)

.....

.....

c) What is the mean of petroleum produced in the April 2006 in the region? (3mks)

d) Draw a simple bar graph to represent the data in the table above. Use a scale of 1cm represents 1,000,000 barrels. Use the graph paper provided. (7mks)



7. Draw a diagram to show a simple field and on it mark and name;

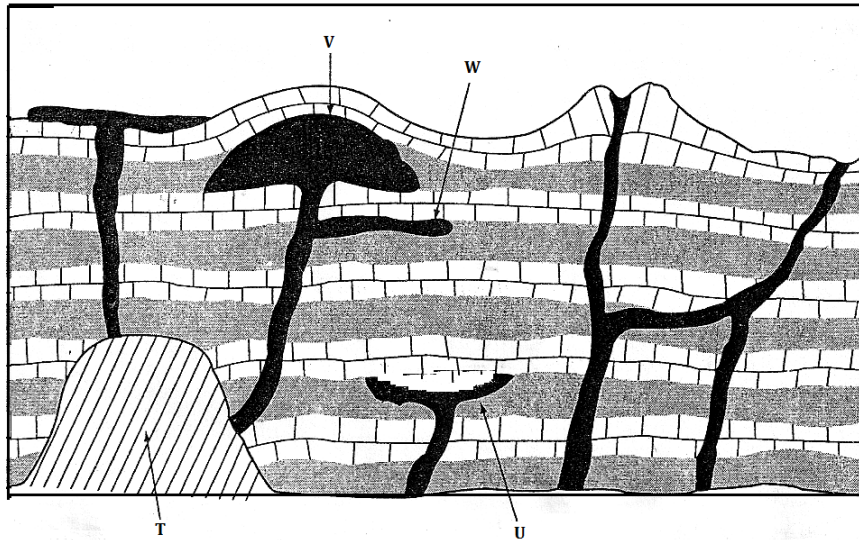
i) An anticline

ii) A limb

iii) Syncline.

(4 marks)

8. The diagram above represents features as vulcanicity. Use it to answer the question that follows;



a) Name the features labeled T, U, V and W

(4mks)

.....

.....

.....

.....

b) Differentiate between magma and lava.

(2mks)

.....

.....

.....

9. Name two fold mountain in Africa.

(2mks)

.....

.....

10. What is a photograph?

(2mks)

.....

.....

11. State three characteristics of ground general view photographs. (3mks)

.....

.....

.....

.....

12. What is climate? (2mks)

.....

.....

.....

.....

13. Give four factors influence climate. (4mks)

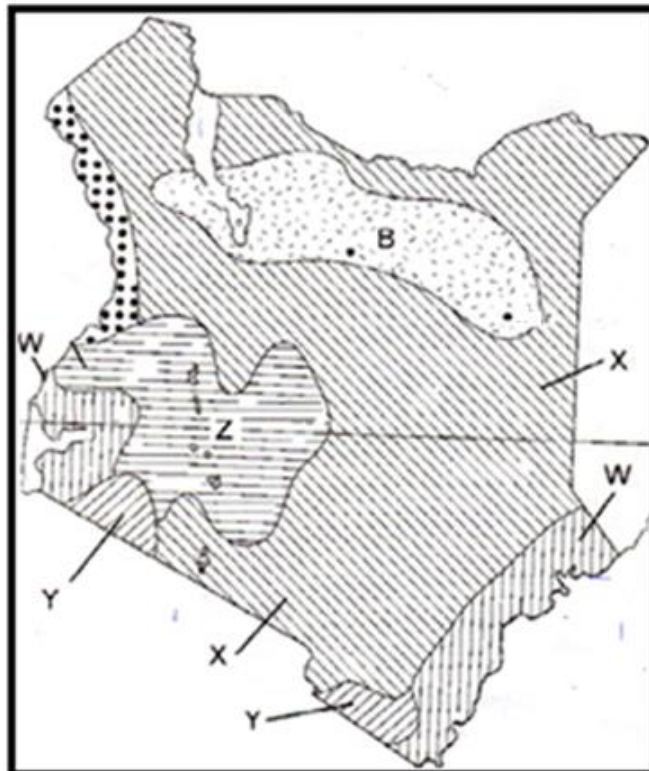
.....

.....

.....

.....

14. The diagram below shows the climatic regions of Kenya.



a) Identify the climatic regions marked W, X, Y and Z.

(4mks)

.....

.....

.....

.....

.....

b) Describe the characteristics of climate region marked B.

(5mks)

.....

.....

.....

.....

.....

.....

.....

.....

.....

.....

15. (a) Differentiate between natural vegetation and secondary vegetation. (2mks)

.....

.....

.....

.....

.....

(b) Outline four factors that influence the distribution and type of natural vegetation in Kenya.

(4mks)

.....

.....

.....

.....

.....

.....